

Owner's Manual  
for  
**Belly Dancer® Shaker**



**STOVALL** LIFE SCIENCE  
INCORPORATED

206-G South Westgate Drive • Greensboro, NC 27407 USA  
(336) 852-0102

# **Installation**

## **◆ Location**

The Belly Dancer® is designed to operate in a reasonable, but limited, range of temperatures and conditions. It can be used in incubated and refrigerated as well as ambient laboratory environments, between 0°C and 40°C. It will operate successfully in non-condensing, high humidity environments of up to 95% humidity.

**Warning:** Operate only in temperature conditions between 0°C to 40°C.

## **◆ Cleaning**

The exterior of the shaker case, platform and other parts can be cleaned with a rag dampened with a solution of mild detergent then rinsed by wiping with a cloth dampened in water.

**Warning:** Do not immerse unit in water or other liquids or use around flammable liquids and gases.

**Warning:** Always unplug power cord before cleaning unit.

## **◆ Electrical Connection**

For personal safety this instrument must be properly grounded. The power cord of the Belly Dancer® is equipped with a three-prong, grounded plug which mates with a standard three-prong, grounded wall receptacle to minimize the possibility of electric shock hazard from this shaker. The user should have the wall receptacle and circuit checked by a qualified electrician to make sure the receptacle is properly grounded. Where a two-prong receptacle is encountered, it is the responsibility of the user to have it replaced with a properly grounded three-prong wall receptacle.

Determine the total amount of current presently being used by other apparatus connected to the circuit that will be used for this shaker. The usual current demand for the 115v Belly Dancer® is approximately ½ amp of current; the 230v is approximately ¼ amp of current. It is critical that this added current demand and other equipment on the circuit not exceed the rating of the fuse or circuit breaker in use.

**Warning:** Do not under any circumstance, cut or remove the third ground prong from the power cords. Do not use a two-prong adapter plug.

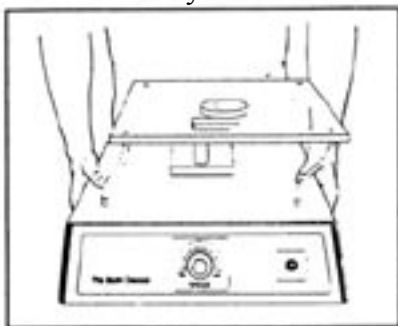
## **◆ Fuse**

The fuse for the 115v Belly Dancer® is 5mm x 20mm 630mA slo blo. The fuse for the 230v Belly Dancer® is 5mm x 20mm 315mA slo blo. Should the fuse blow, replace with a new fuse of the same value.

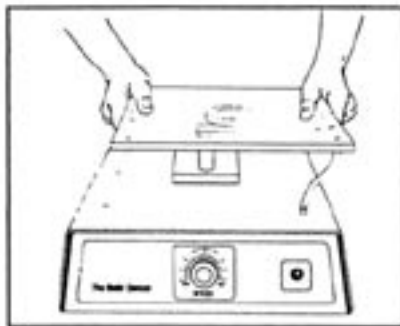
**Caution:** Be sure the input voltage is of the same voltage as specified on the nameplate located on the back panel of the shaker.

### ◆ Transport

Always unplug the power cord from the wall receptacle before moving the shaker. When moving the Belly Dancer® from one location to another, lift and carry the shaker by grasping underneath the aluminum case. **Do not lift or transport shaker by means of the acrylic platform.** Carrying the shaker by the platform may cause serious damage to the shaker and void the warranty.



**CORRECT TRANSPORT**



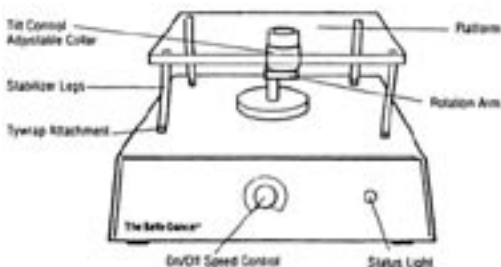
**INCORRECT TRANSPORT**

### Operation

Your new Belly Dancer® shaker is shipped fully assembled and ready for use. Before plugging the power cord of the shaker into an outlet, take the two following steps:

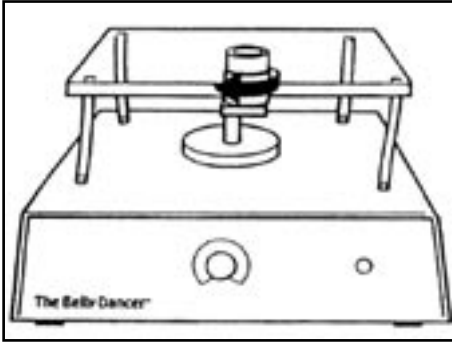
1. Turn the brass collar of the tilt control counterclockwise all the way in for maximum tilt platform position. The shaker is shipped with the tilt control all the way up and level.
2. Make sure the power is in the OFF position by turning the speed control clockwise, then counter clockwise until you hear the on-off click of the switch.

To break the shaker in, plug the power cord into the outlet and run the shaker for 1 to 2 hours at half speed - with the arrow on the speed control in the 12 o'clock position.

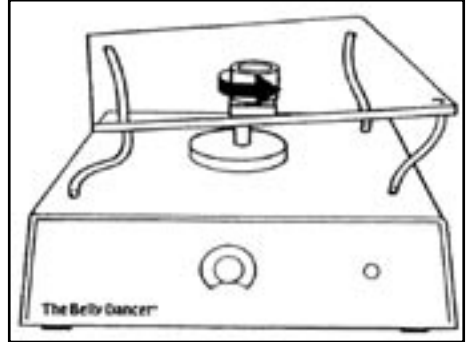


### ◆ Platform Pitch Adjustment

The Belly Dancer® is shipped with the pitch control fully extended which causes the platform to orbit in a level position when operating. To adjust the pitch of the platform for the unique, undulation motion of the Belly Dancer®, adjust the title control collar beneath the platform by turning it in a counter-clockwise manner. To achieve maximum tilt of the platform adjust the collar all the way down. Experiment with the degree of tilt and speed that will best satisfy safety and laboratory requirements.



LEVEL POSITION PLATFORM



MAXIMUM TILT POSITION PLATFORM

**Caution:** Maximum load should not exceed 20 lbs.

### Troubleshooting

In the event any problem develops with your Belly Dancer®, do not attempt to perform any service on the unit without firsts contacting the Stovall Life Science Service Department. Unauthorized servicing may void the warranty. Stovall will readily supply information regarding troubleshooting minor problems upon request.

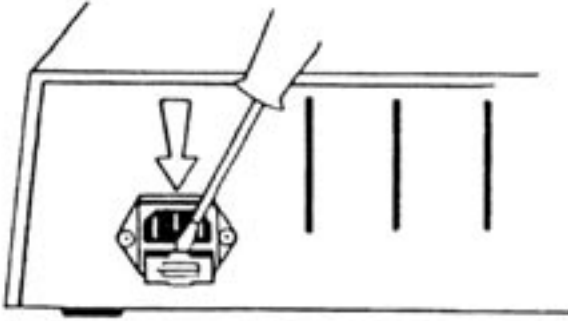
In any correspondence with Stovall concerning your Belly Dancer® please refer to the appropriate Model Number and Serial Number. This information may be found on the label attached to the rear of the unit.

Should your shaker suddenly cease to operate, firsts make sure there is power to the circuit to which the shaker is connected.

Secondly, check the fuse in the shaker located in the drawer of the power entry module. Use a small screwdriver to pry the fuse drawer open to inspect the fuse. A spare fuse is located inthe drawer as well. Always replace a defective fuse with one of equal rating: 630 mA slo-blo for 115v units; 315 mA slo-blo for 230v units.

*Continued on next page*

## Troubleshooting Continued



If status light does not operate when the power is turned on, one of the above two situations is most likely the cause of the problem.